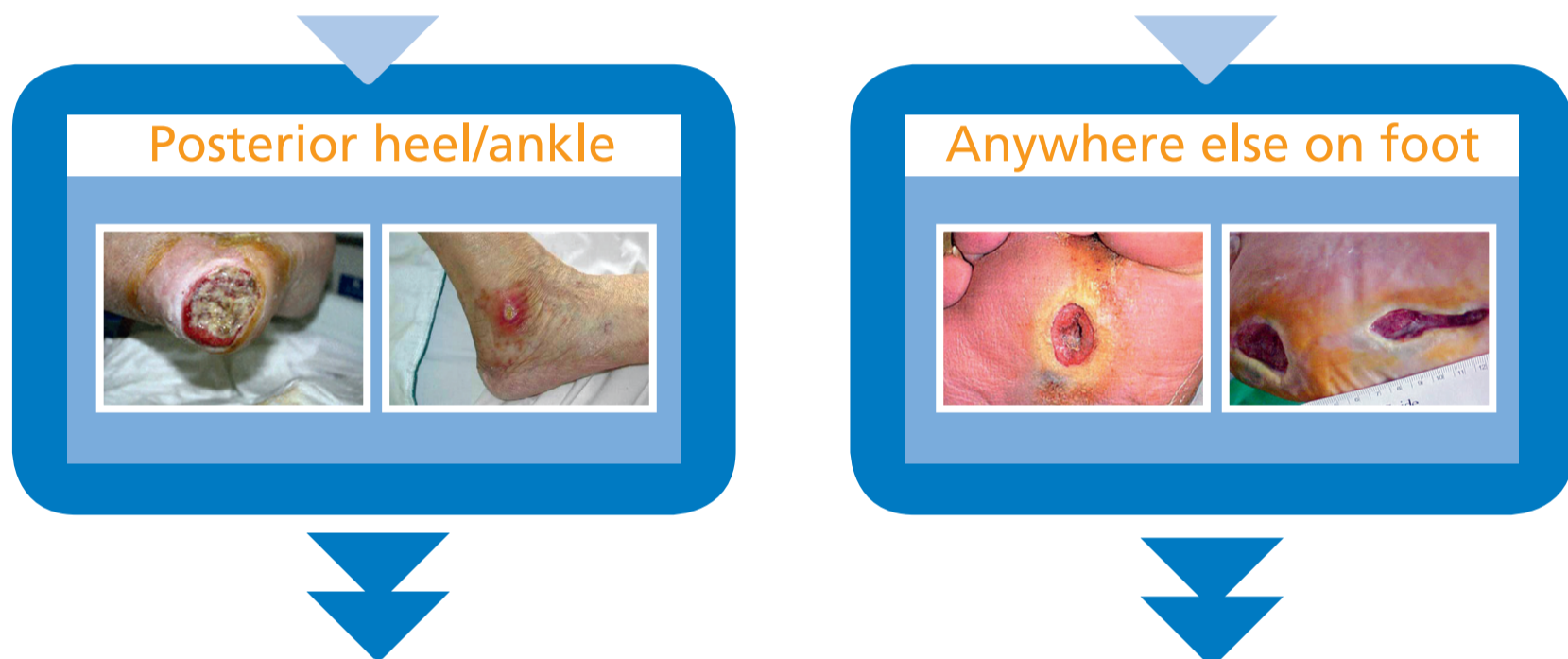


# Pressure ulcer of the foot pathway

## Podiatry and tissue viability

Patient identified with a wound to the foot



Referral to tissue viability  
Fax: 0121 466 3611

Referral to podiatry  
high risk team  
Fax: 0121 465 8566

Tissue viability to complete  
initial assessment  
Refer to podiatry  
(essential if patient has  
diabetes).

Overall management of all  
foot wounds including sharp  
debridement pressure relief  
heel casts wound care