



# Care Homes

## LPZ Audit 2015 and 2016

26 homes took part in a **2015** pilot to audit the number of pressure ulcers and continence problems across Nottinghamshire and Derbyshire.

30 homes took part in **2016** (22 of these 30 took part in the original pilot) across Nottinghamshire, Derbyshire, Northamptonshire and Lincolnshire.



**489**  
residents data  
uploaded in  
**2015**

**511**  
residents data  
uploaded in  
**2016**



**2015:** | **204 (42%)**

**2016:** | **204 (40%)**

from residential



**285 (58.3%)**

**307 (60%)**

from nursing care  
homes



**307 (63%)**

**299 (59%)**

of residents were  
recorded as having  
dementia



**90 (18.4%)**

**112 (22%)**

of residents were  
recorded as having  
had a stroke

### Nutrition, Restraints and Falls 2016



**216 (42%)**  
residents at risk of  
**malnutrition**



**103 (20%)**  
residents who were restrained in the  
**last 30 days**

**2015:**  
**60.1%**  
respondents were  
**female**



**2016:**  
**73%**  
respondents were  
**female**



**Mean age of  
respondents  
was...**

**2015:**  
**84.6**  
years

**2016:**  
**85**  
years

(51-105 range)



**201 (39%)**  
residents have  
fallen in the  
**last 12 months**

**47 (9%)**  
residents have fallen  
in the  
**last 30 days**

**The median  
length of  
residence in  
days**

**2015**

**508**  
Days

**2016**

**626**  
Days

For copies of the full EMAHSN Health Analytics and Informatics data pack on Care Homes please contact the EM PSC team:  
**Cheryl Crocker:** [cheryl.crocker@nottingham.ac.uk](mailto:cheryl.crocker@nottingham.ac.uk)



# Care Homes

## LPZ Audit 2015 and 2016

### Pressure ulcers

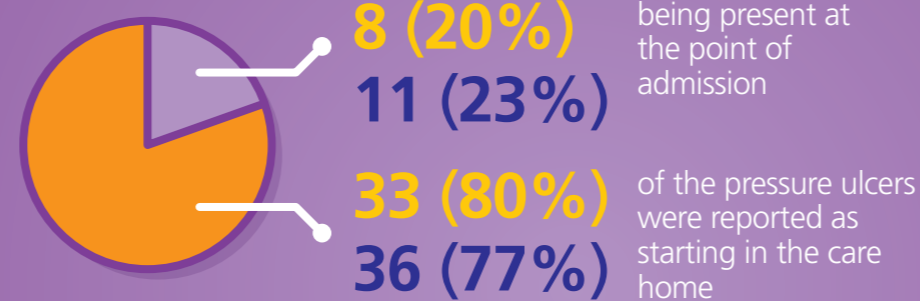
**2015 | 403 (82%)**  
of residents were identified as being at high risk of pressure ulcers (as indicated by a Braden score of <20).



**2016 | 357 (70%)**  
of residents were identified as being at risk of a pressure ulcer in the opinion of the assessor.

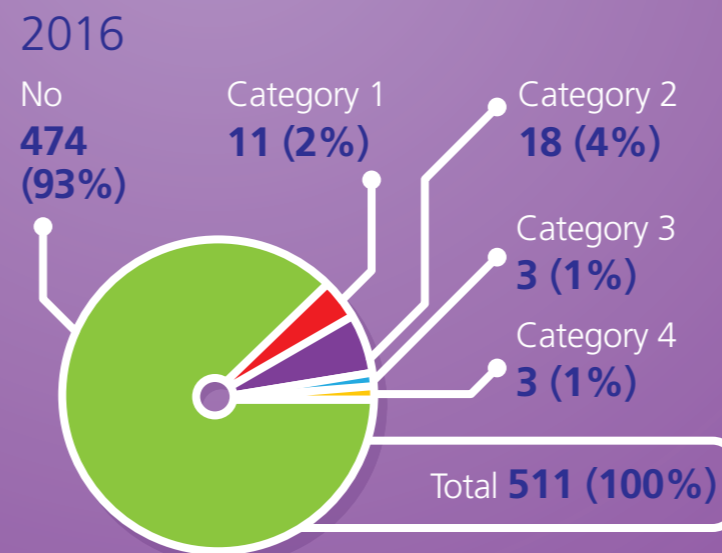
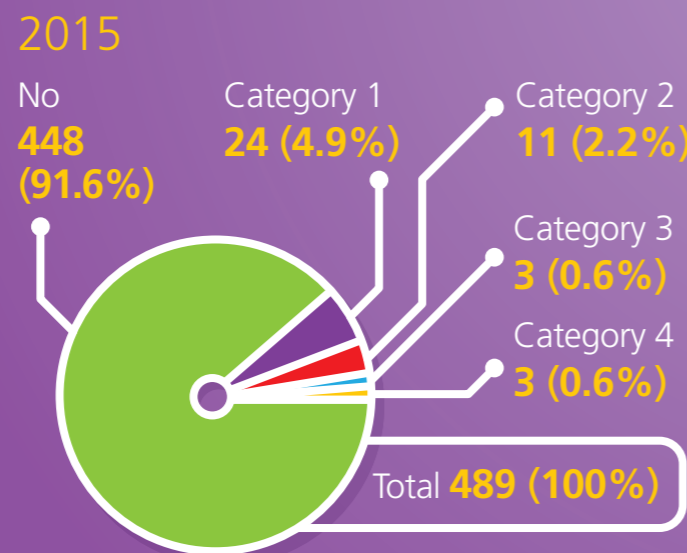
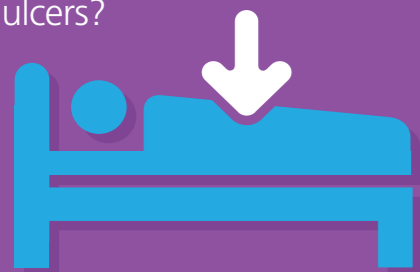
**41** pressure ulcers were identified over **41 (8.4%)** residents in **2015**

**47** pressure ulcers were identified over **37 (7%)** residents in **2016**

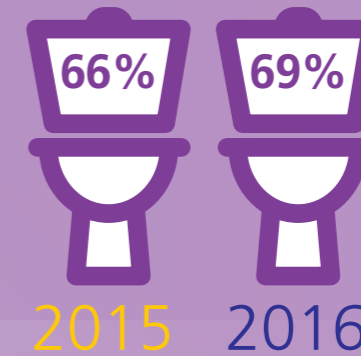


### Prevalence of pressure ulcers 2015 and 2016

Does the patient have pressure ulcers?



### Continence



of residents were incontinent urine, faeces or both.

**27 (8%)** had an indwelling catheter for urinary incontinence in **2015**

**21 (4%)** had an indwelling catheter for urinary incontinence in **2016**

With urinary incontinence:

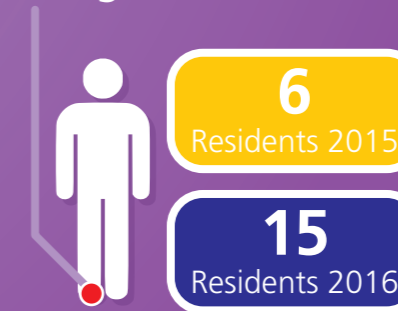


Those with faecal incontinence had this prior to admission to their care home:

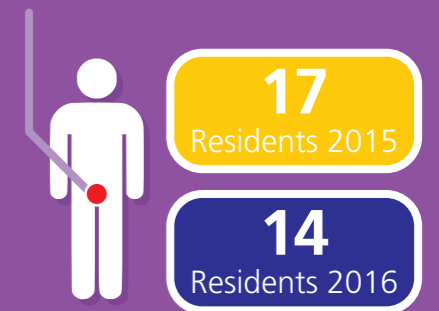


### Site of pressure ulcers

Single Heel



Sacrum



For copies of the full EMAHSN Health Analytics and Informatics data pack on Care Homes please contact the EM PSC team:  
**Cheryl Crocker:** [cheryl.crocker@nottingham.ac.uk](mailto:cheryl.crocker@nottingham.ac.uk)